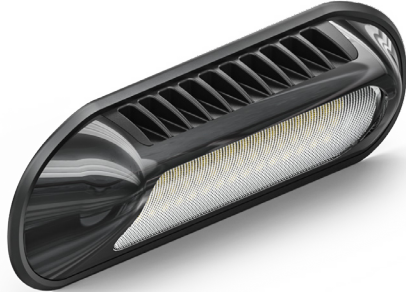




PERIMETER FLOOD LIGHT

Illumination



PART #	PF-1024
DIMENSIONS	9.3" x 1.5" x 3.1"
VOLTAGE	10-30VDC
CURRENT DRAW	6 Amps @ 13V
MODES	3 Modes
OPTICS	45° Down Spread
LED COLORS	■
LED COUNT	38 LEDs
CABLE LENGTH	1ft

CERTIFICATIONS:



DESCRIPTION:

Elevate your vehicle's visibility with the Feniex Perimeter Flood Light, a cost-effective reverse light and scene lighting solution engineered to deliver exceptional performance and durability. Designed with a 45-degree downward optic, this versatile light provides focused light distribution, improving visibility directly where you need it most. From illuminating your surroundings to enhancing safety while reversing, this versatile light provides the optimal light spread for a wide range of applications.

- 2 brightness modes: 100% (Scene mode) and 40% dim (Reverse mode)
- Raw Lumens: Scene mode-4500LM, Reverse mode-1800LM
- Effective Lumens: Scene mode-3030LM, Reverse mode-1046LM
- Compatible with any 12V communication controller
- Made with durable aluminum and polycarbonate
- Comes with standard mounting hardware



Perimeter Flood Wires



Polycarbonate plastic base



Anti-yellowing & anti-cracking clear-coated polycarbonate lens